

RUBBER EXPANSION JOINTS RANGE

DATA SHEET

1

Single Sphere



2

Spool Type



3

Union Type



PRODUCT RANGE

A Selection of Rubber Expansion Joints

PTFE-LINED RUBBER EXPANSION JOINTS

PTFE lining option for single Sphere and spool type expansion joints

Performance

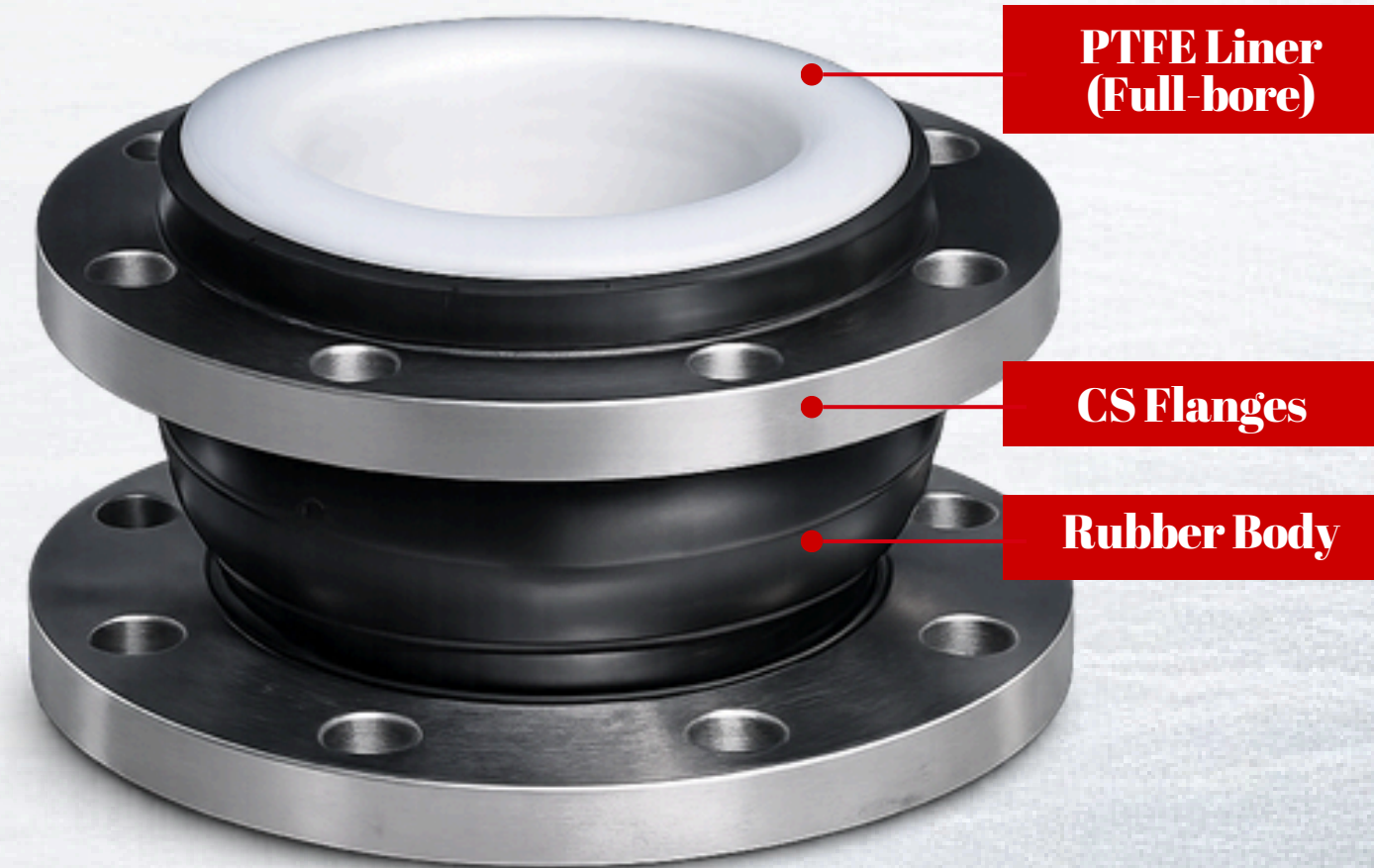
- Pressure and movement capabilities depend on the base expansion joint type
- PTFE liner does not increase movement capacity
- Maximum temperature limited by elastomer body not PTFE liner
- Vacuum resistance available with vacuum support ring (on request)

Why PTFE LINING

- Excellent chemical resistance
- Non-stick, low friction flow surface
- Protects elastomer from aggressive media
- Extends service life in a corrosive applications

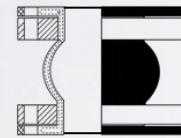
Typical Applications

- Chemical processing lines
- Acid / alkali transfer systems
- Aggressive wastewater & effluent lines
- Industrial process piping requiring chemical resistance



totflex

FULL FACED SPOOL TYPE RUBBER EXPANSION JOINT



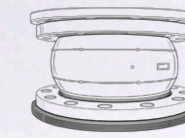
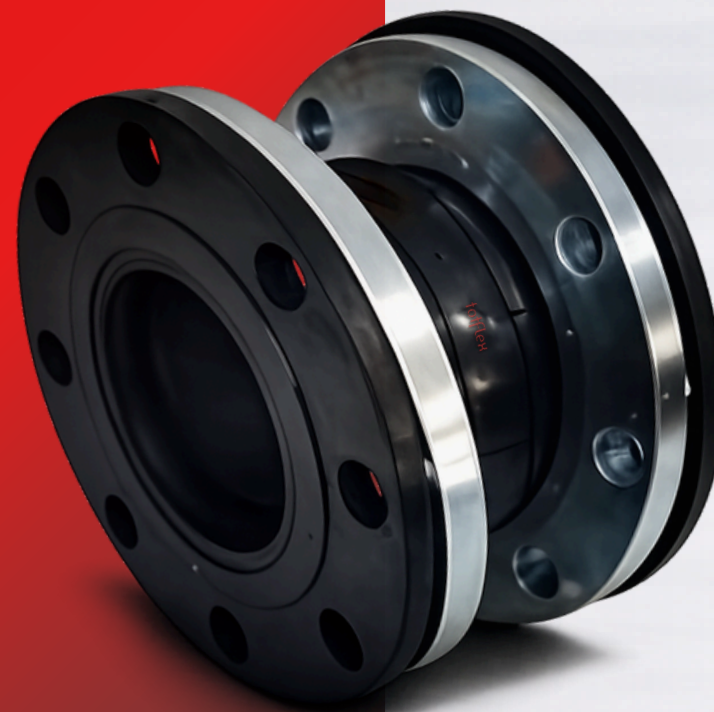
PERFORMANCE

Temp:
-30°C to +150°C

Pressure Rating:
up to 40 bar

Burst Pressure:
3× working pressure

Vacuum max:
to -3 bar (with vacuum ring)



Full Faced - Spool RUBBER EXPANSION JOINTS

Absorb vibration . Componsate movment . Protect piping



Full-faced spool type rubber expansion joints seal flanged connections and absorb movement and vibration in HVAC, water/wastewater, and industrial piping.



Vibration & noise isolation



Axial / lateral / angular
movement absorption



Full-face sealing reliability



Reduc stress on pumps
& equipment



Product Overview

TOTFLEX T280 Full Faced Spool Type Rubber Expansion Joint is a full-face flanged elastomeric expansion joint with a spool/arched body designed to absorb axial, lateral, and angular movements while isolating vibration; it uses selectable rubber compounds (EPDM / NBR / CR / NR) with fabric reinforcement (polyester / nylon / aramid) and flanges in carbon steel, ductile iron, or stainless steel with PN10 / PN16 / PN25 / Class 150 drilling, rated -30°C to +150°C and 0-40 bar (burst 3x) with vacuum up to -3 bar using a vacuum ring, with DN32-DN1000 lengths.

Advantages

- Full-face sealing improves flange tightness.
- Spool arch absorbs axial, lateral, and angular movement.
- Isolates vibration and noise to protect equipment.
- EPDM/NBR/CR/NR with fabric reinforcement (selectable).
- PN10/PN16/PN25/Class 150 drilling options available.
- Vacuum up to -3 bar with vacuum ring.

Application Areas

- HVAC piping (heating/cooling loops)
- Pump rooms; rotating equipment connections
- Water & wastewater; sewage/sludge lines
- Industrial process and utility lines
- Chemical/petrochemical service (compound dependent)
- Marine/shipboard & offshore piping
- Fire protection lines
- Pulp & paper; scrubber/FGD services

FULL FACE RUBBER EXPANSION JOINT - SPOOL TYPE - PN10

Description - T280 Full Faced (Spool Type) is a full-face flanged rubber expansion joint with a single-arch spool body, using DN-based face-to-face lengths (95-260 mm) to provide reliable flange sealing while absorbing vibration and axial/lateral/angular movement.

Size Range

DN32-DN1000

Design:

Full-Faced Spool Type / Single Arch

Rubber Options

EPDM / NBR / CR / NR

Construction:

Reinforced rubber body + fabric layers + reinforced ring

Flange drilling/rating:

PN 10

Connection

Split Type Flange

Options:

PIFE Lining, Tie Rods, Control Rods



Axial Compression
20-28 mm



Axial Extension
20-25 mm



Lateral Deflection
14-24 mm



Angular Deflection
10°-15°

DN	Length	Outer Diameter	Internal Diameter	PN10 Flange
mm	mm	mm	mm	Item code
32	95	-	32	T280_10000000-00
40	95	-	40	T280_10000004-00
50	105	-	50	T280_10000008-00
65	115	-	65	T280_10000012-00
80	135	-	80	T280_10000016-00
100	150	-	100	T280_10000020-00
125	165	-	125	T280_10000024-00
150	180	-	150	T280_10000028-00
200	210	-	200	T280_10000032-00
250	230	-	250	T280_10000035-00
300	245	-	300	T280_10000039-00
350	255	-	350	T280_10000043-00
400	255	-	400	T280_10000047-00
450	255	-	450	T280_10000051-00
500	255	-	500	T280_10000055-00
600	260	-	600	T280_10000059-00
700	260	-	700	T280_10000063-00
800	260	-	800	T280_10000067-00
900	260	-	900	T280_10000071-00
1000	260	-	1000	T280_10000075-00



** For sizes outside the listed range, please contact us with your required DN and connection details for a custom quotation.

FULL FACE RUBBER EXPANSION JOINT - SPOOL TYPE - PN16

Description - T280 Full Faced (Spool Type) is a full-face flanged rubber expansion joint with a single-arch spool body, using DN-based face-to-face lengths (95-260 mm) to provide reliable flange sealing while absorbing vibration and axial/lateral/angular movement.

Size Range

DN32-DN1000

Design:

Full-Faced Spool Type / Single Arch

Rubber Options

EPDM / NBR / CR / NR

Construction:

Reinforced rubber body + fabric layers + reinforced ring

Flange drilling/rating:

PN 16

Connection

Split Type Flange

Options:

PTFE Lining , Tie Rods , Control Rods



Axial Compression
20-28 mm



Axial Extension
20-25 mm



Lateral Deflection
14-24 mm



Angular Deflection
10°-15°

DN	Length	Outer Diameter	Internal Diameter	PN10 Flange
mm	mm	mm	mm	Item code
32	95	-	32	T280_10000001-00
40	95	-	40	T280_10000005-00
50	105	-	50	T280_10000009-00
65	115	-	65	T280_10000013-00
80	135	-	80	T280_10000017-00
100	150	-	100	T280_10000021-00
125	165	-	125	T280_10000025-00
150	180	-	150	T280_10000029-00
200	210	-	200	T280_10000033-00
250	230	-	250	T280_10000036-00
300	245	-	300	T280_10000040-00
350	255	-	350	T280_10000044-00
400	255	-	400	T280_10000048-00
450	255	-	450	T280_10000052-00
500	255	-	500	T280_10000056-00
600	260	-	600	T280_10000060-00
700	260	-	700	T280_10000064-00
800	260	-	800	T280_10000068-00
900	260	-	900	T280_10000072-00
1000	260	-	1000	T280_10000076-00



** For sizes outside the listed range, please contact us with your required DN and connection details for a custom quotation.

FULL FACE RUBBER EXPANSION JOINT - SPOOL TYPE - PN25

Description - T280 Full Faced (Spool Type) is a full-face flanged rubber expansion joint with a single-arch spool body, using DN-based face-to-face lengths (95-260 mm) to provide reliable flange sealing while absorbing vibration and axial/lateral/angular movement.

Size Range

DN32-DN1000

Design:

Full-Faced Spool Type / Single Arch

Rubber Options

EPDM / NBR / CR / NR

Construction:

Reinforced rubber body + fabric layers + reinforced ring

Flange drilling/rating:

PN 25

Connection

Split Type Flange

Options:

PTFE Lining , Tie Rods , Control Rods



Axial Compression
20-28 mm



Axial Extension
20-25 mm



Lateral Deflection
14-24 mm



Angular Deflection
10°-15°

DN	Length	Outer Diameter	Internal Diameter	PN10 Flange
mm	mm	mm	mm	Item code
32	95	-	32	T280_10000002-00
40	95	-	40	T280_10000006-00
50	105	-	50	T280_10000010-00
65	115	-	65	T280_10000014-00
80	135	-	80	T280_10000018-00
100	150	-	100	T280_10000022-00
125	165	-	125	T280_10000026-00
150	180	-	150	T280_10000030-00
200	210	-	200	T280_10000034-00



** For sizes outside the listed range, please contact us with your required DN and connection details for a custom quotation.

FULL FACE RUBBER EXPANSION JOINT - SPOOL TYPE - CLASS 150

Description - T280 Full Faced (Spool Type) is a full-face flanged rubber expansion joint with a single-arch spool body, using DN-based face-to-face lengths (95-260 mm) to provide reliable flange sealing while absorbing vibration and axial/lateral/angular movement.

Size Range

DN32-DN1000

Design:

Full-Faced Spool Type / Single Arch

Rubber Options

EPDM / NBR / CR / NR

Construction:

Reinforced rubber body + fabric layers + reinforced ring

Flange drilling/rating:

Class 150

Connection

Split Type Flange

Options:

PTFE Lining, Tie Rods, Control Rods



Axial Compression
20-28 mm



Axial Extension
20-25 mm



Lateral Deflection
14-24 mm



Angular Deflection
10°-15°

DN	Length	Outer Diameter	Internal Diameter	PN10 Flange
mm	mm	mm	mm	Item code
32	95	-	32	T280_10000003-00
40	95	-	40	T280_10000007-00
50	105	-	50	T280_10000011-00
65	115	-	65	T280_10000015-00
80	135	-	80	T280_10000019-00
100	150	-	100	T280_10000023-00
125	165	-	125	T280_10000027-00
150	180	-	150	T280_10000031-00
200	210	-	200	T280_10000034-00
250	230	-	250	T280_10000038-00
300	245	-	300	T280_10000042-00
350	255	-	350	T280_10000046-00
400	255	-	400	T280_10000050-00
450	255	-	450	T280_10000054-00
500	255	-	500	T280_10000058-00
600	260	-	600	T280_10000062-00
700	260	-	700	T280_10000066-00
800	260	-	800	T280_10000070-00
900	260	-	900	T280_10000074-00
1000	260	-	1000	T280_10000078-00



** For sizes outside the listed range, please contact us with your required DN and connection details for a custom quotation.



FULL FACED SPOOL TYPE RUBBER EXPANSION JOINT