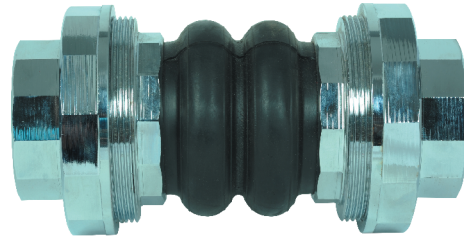
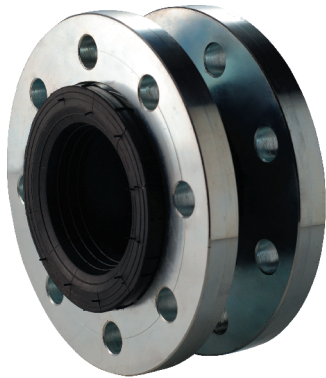


Totflex



RUBBER EXPANSION JOINTS



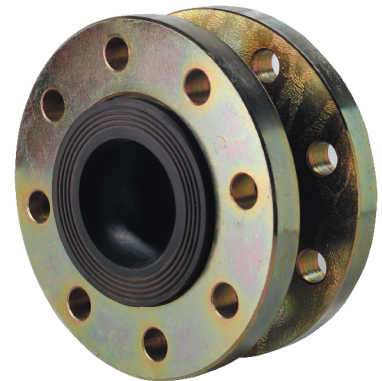
Totflex rubber expansion joints are manufactured from special synthetic rubber. These expansion joints are able to work for temperatures from -5 °C to 90 °C due to their heat resistant structure. Totflex rubber expansion joints are flexible expansion joints that absorb vibration, noise and elongation in the system.

Advantages of the Totflex Rubber Expansion Joints

- Absorb axial, lateral and angular expansions
- Isolate vibration and noise
- Accommodate misalignment
- Do not require any gasket or seal
- Easy assembly due to loose flange connections
- Can equipped with different type of flange pressure class

Application Area

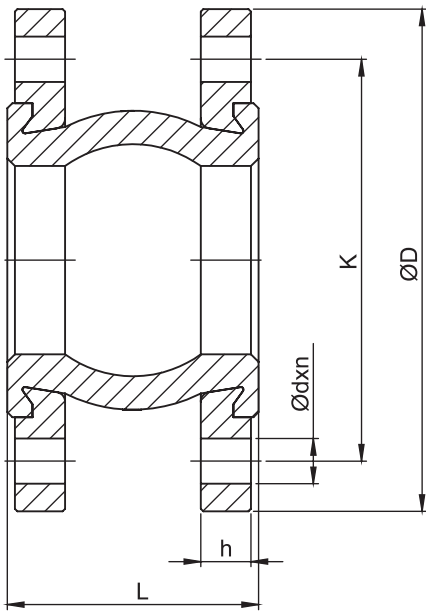
- Shipbuilding & Marine Applications
- HVAC Applications
- Air Compressors
- Mechanical Installations
- Domestic Water Applications
- Liquid Industry



Technical Futures	
PART	MATERIAL
RUBBER	SBR-NR/NBR
NYLON FIBRE	SYNTHETIC FIBRE
STEEL WIRE	CARBON STEEL
FLANGE	St 37 CARBON STEEL

Temperature - Pressure Relation		
Product	Max. Working	Max. Working Pressure
SBR-NR RUBBER EXPANSION JOINT	30 °C	16 bar
	60 °C	10 bar
	90 °C	6 bar
NBR RUBBER EXPANSION JOINT	20 °C	16 bar
	50 °C	10 bar
	70 °C	6 bar

RUBBER EXPANSION JOINT WITH FLANGE CONNECTION

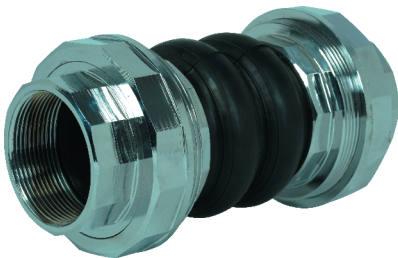


DN	L	Axial Movement (mm)	Lateral Movement (mm)	Angular Movement (±)	Product Code
32	100	+10/-10	+10/-10	±10°	RB.FL.20.20.0032.0100
40	100	+10/-10	+10/-10	±10°	RB.FL.20.20.0040.0100
50	100	+10/-10	+10/-10	±10°	RB.FL.20.20.0050.0100
65	100	+10/-10	+10/-10	±10°	RB.FL.20.20.0065.0100
80	100	+10/-10	+12/-12	±12°	RB.FL.20.32.0080.0100
100	100	+10/-10	+12/-12	±12°	RB.FL.20.32.0100.0100
125	120	+10/-10	+12/-12	±12°	RB.FL.20.32.0125.0120
150	120	+10/-10	+12/-12	±12°	RB.FL.20.32.0150.0120
200	120	+10/-10	+12/-12	±12°	RB.FL.20.32.0200.0120
250	120	+10/-10	+12/-12	±12°	RB.FL.20.32.0250.0120
300	120	+10/-10	+12/-12	±12°	RB.FL.20.32.0300.0120
350	266	+16/-25	+18/-18	±15°	RB.FL.41.36.0350.0266
400	266	+16/-20	+18/-18	±15°	RB.FL.36.36.0400.0266
450	200	+12/-20	+18/-18	±15°	RB.FL.32.36.0450.0200
500	200	+12/-20	+18/-18	±15°	RB.FL.32.36.0500.0200

* Upon customer request special designed rubber expansion joints are available.

Totflex has right to change any technical alterations and deviations without any notification

RUBBER EXPANSION JOINT WITH DOUBLE SPHERE



Size		L	Axial Movement (mm)	Lateral Movement (mm)	Angular Movement (±)	Product Code
DN	Inch					
DN15	1/2"	165	+6/-22	+22/-22	±30°	RB.DS.015.0165
DN20	3/4"	165	+6/-22	+22/-22	±30°	RB.DS.020.0165
DN25	1"	175	+6/-22	+22/-22	±30°	RB.DS.025.0175
DN32	1 1/4"	186	+6/-22	+22/-22	±30°	RB.DS.032.0186
DN40	1 1/2"	186	+6/-22	+22/-22	±30°	RB.DS.040.0186
DN50	2"	186	+6/-22	+22/-22	±30°	RB.DS.050.0186
DN65	2 1/2"	218	+6/-22	+22/-22	±30°	RB.DS.065.0218
DN80	3"	260	+6/-22	+22/-22	±30°	RB.DS.080.0260

* Upon customer request special designed rubber expansion joints are available.

Totflex has right to change any technical alterations and deviations without any notification

Totflex

Soganlik Yeni Mah. Ataturk Cad.
No: 6/1 Else Apt. Kat: 8 Daire: 9
Istanbul-Turkey
Tel: 0216 306 40 44

sales@totflex.net
www.totflex.net